

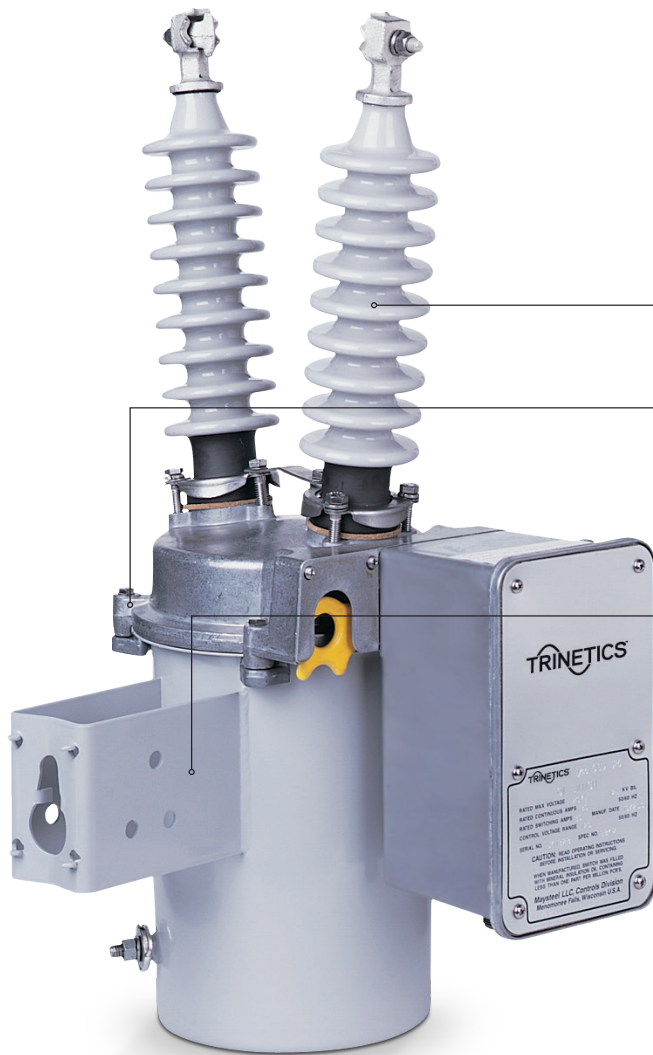
Reliable, Robust  
and Economical



## Oil-type Capacitor Switches

Trinetics® oil-type switches offer a time-proven and industry-tested product design that provides a cost-efficient solution to capacitor bank switching. Use them in SmartBank™ pole- or pad-mounted capacitor banks

The Trinetics® 200A, 15kV CSD oil switch is available for 95kV and 125kV BIL applications. For higher ratings, the Trinetics 20kV CSD oil switch is rated for 90 amps of continuous current. Both versions have identical internal and external BIL ratings for long life and enhanced power performance.



**Porcelain bushings** have 11", 17", or 24" creep distances and are designed for low radio interference.

**Easily accessible** for service. Simply remove four bolts.

**Weather shield** protects the high-visibility, yellow manual level from the elements, while permitting complete access for manual operation.

**Five-pin receptacle** and an integrated NEMA hanger for quick and easy installation.

**Pole, wall, or frame mounting** possible without additional wiring or hardware. Kits available for cross-arm mounting.

**Can be manually switched** open/close or automatically operated by a capacitor controller or similar device

**Switch-rating data** is permanently engraved on a heavy-duty aluminum nameplate.

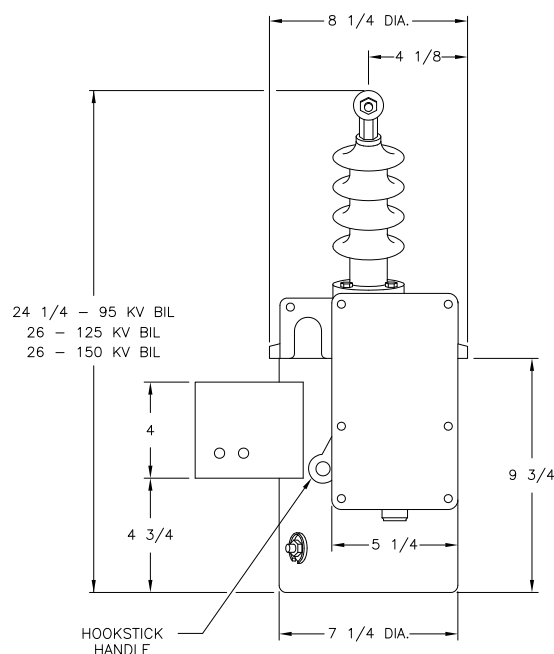
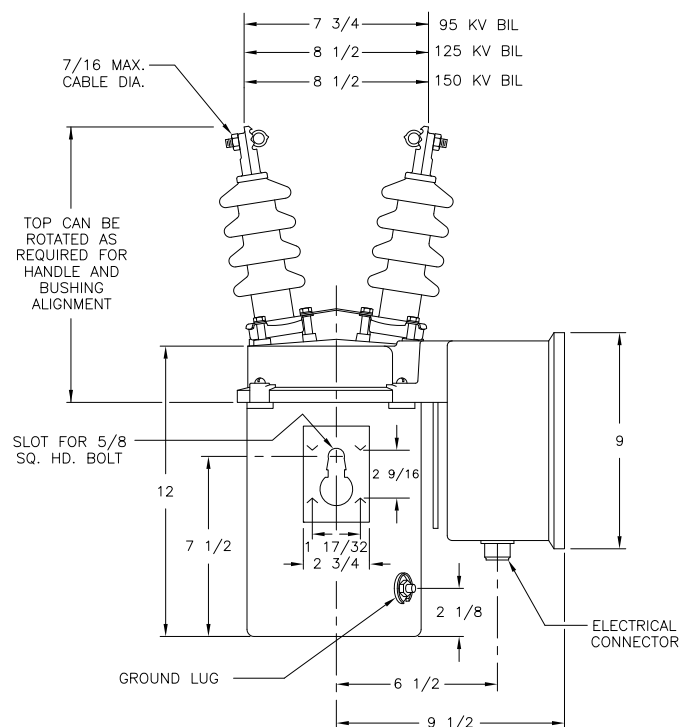
**Exterior hardware** is stainless steel, aluminum, or plated brass.

**Steel tank** is corrosion resistant, painted with a gray polyurethane for maximum wear resistance.

## Product Technical Specifications:

CSD Specifications	CSD15		CSD20	
Rated Maximum Voltage, kV RMS	15		20	
Nominal Voltage Class, kV RMS	14.4		19.9	
Impulse Withstand Voltage, kV BIL	95/125		125/150	
Low Frequency Insulation Level Withstand Test, 60 Hz:				
1 Minute Dry, kV	35/45		45	
10 Seconds Wet, kV	30/40		40	
Continuous Current, Amps	200		90	
Capacitive Switching Current, Amps	200		90	
Momentary Current Rating, Amps Asymmetrical	9000		9000	
Short Time Current Ratings:				
½ Second, Amps Symmetrical	6000		6000	
1 Second, Amps Symmetrical	4500		4500	
High Frequency Transient Making Current, Amps Peak	12000		12000	
Nominal Operating Voltage, VAC 50/60 Hz	120	240	120	240
Operating Voltage Range, VAC 50/60 Hz	100 to 130	210 to 250	100 to 130	210 to 250
Motor Current Rating, Amps	2.8	(1.4)	2.8	(1.4)
Switch Operating Time, Seconds (Average/Max.)	2.5/4.0		2.5/4.0	
Weight with Oil, Pounds	37		39	
Oil Volume, Gallons	1.5		1.5	

## Product Dimensions



## CSD Capacitor Switch Selection

Bushing Creep Distance	Load Rating	Product Description	kV	kV	Spec#	Part#
			L-G	BIL		
11"	200A	CSD15-95	15	95	6610	33050001
17"	200A	CSD15-125	15	125	6770	33078601
17"	90A	CSD20-125	20	125	6842	33184601
24"	90A	CSD20-150	20	150	6843	33184701

Switch Auxiliary Options - Substitute for the last 2 digits in the switch part numbers above.

02 - Form C Aux Switch (A & B contacts with LV supply common neutral)

04 - Form A (N.O.) Dry Aux switch

07 - Form C - Dry Aux Switch; 6-pin receptacle

15 - Form B (N.C.) Dry Aux Switch



[hubbelpowersystems.com](http://hubbelpowersystems.com)

©2018 Hubbell Power Systems. All rights reserved.

For product inquiries, please contact [trinetics-marketing@hubbell.com](mailto:trinetics-marketing@hubbell.com) or contact your Hubbell Sales Representative or customer service for more information.

Hubbell, the Hubbell logo are registered trademarks or trademarks of Hubbell Power Systems.

All other trademarks are the property of their respective owners.

Printed in U.S.A. BR\_10\_205\_E